



770.491.0343 | Imisystemsinc.com

Leading Transaction Clearing Company Selects LMI Systems Inc. for Large-Scale Security/Access Control Project



For firms that process millions of transactions and are responsible for protecting huge amounts of sensitive information, security and access control are paramount. LMI Systems, Inc. recently worked with one such organization to install a network of approximately 200 security cameras and multiple access control devices throughout the firm's 14-story office building. The extensive project began in 2014 and continued through most of 2015.

Project Scope and Challenges

For the effort, LMI installed several hundred thousand feet of cabling, meeting rigorous specifications from the customer regarding layout. From the pulling of the cable through the plenum space, to the J-hook installation, terminations and labelling, LMI met or exceeded all customer expectations.

LMI also installed cameras on every floor and installed and configured an external network of cameras that covers the entire property. All of the cameras were manufactured by Axis, one of LMI's vendor partners, but each was perfectly matched, in terms of features and functionality, to the specific need. (For more about the camera systems, see Lights, Camera, Action! later in this case study.)

For the access control system, LMI recommended a Lenel system with an average of 10 card readers per floor. To ensure physical security, the project also incorporated a number of turnstiles, plus x-ray machines and a metal detector. The system's software is Lenel OnGuard, a feature-rich access control application that includes a robust alarm monitoring module, plus built-in support for card technologies, biometrics and wireless access control devices.

The entire solution is controlled by Ocularis IS, an IP-video surveillance and security platform that includes a full-fledged video management system (VMS) combined with comprehensive physical security information management (PSIM) functionality. Ocularis IS provides:

- Integration and coordination of integrated physical security, content analytic and other detection systems;
- Full VMS functionality with centralized management of cameras, connected devices, recording servers;
- Redundant servers at multiple sites;
- Centralized event, end-user rights and video recording and distribution management.



Electrical



Networks



Security



Telecommunications



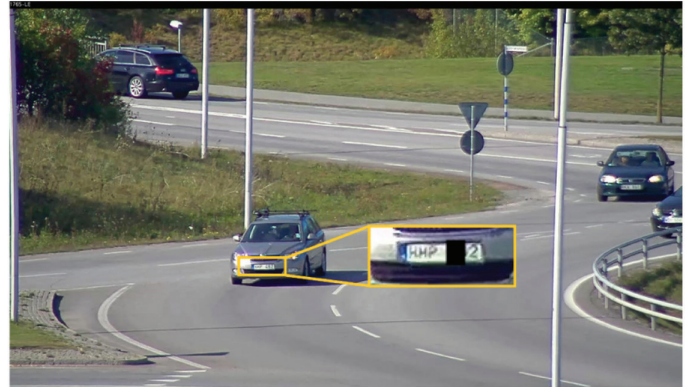
Audio Visual



The solution as a whole will ensure the financial transaction processor has fortress-like access control. Security team members will be able to see and grant or deny entry, remotely, to individuals wishing to access the building at any entrance point.

Lights, Camera, Action!

One of the most important and innovative components of the solution was the network of cameras, for which LMI specified four different models. For the interior network, LMI installed both the Axis Network Dome Camera P3354 and the Axis 360 View Dome Camera M3007-PV. The P3354 is a light-sensitive, day/night fixed-dome camera housed in a tamper-resistant indoor casing. With video motion detection and an active tampering alarm, it was the perfect solution for little used hallways, stairwells and other areas of the building that needed to be secure, but did not experience a high traffic count. The camera is also known for its excellent dynamic contrast and powerful zoom capabilities.



The image to the left is taken with a digital single-lens reflex camera with a 50 mm lens – thus representing the view of the human eye. The image to the right is a snapshot from AXIS Q1765-LE in 18x zoomed-in view where the license plate of a car 275 m (900 ft) away can be read.

The Axis M3007-PV is a compact, indoor fixed mini-dome camera, also housed in a vandal-resistant casing, which offers 360 degree/180 degree, panoramic views, making it well suited to large open areas where a broad sweep of vision was required. Both cameras are individually configurable and run on Power over Ethernet, eliminating the need for additional electrical wiring runs.

For the outdoor network, LMI recommended the Axis HD 2MP Bullet Camera with IR P1425-LE and the Axis HD 12X Zoom Bullet Camera with IR Q1765-LE. These two cameras complimented each other's strengths in the same manner as the two indoor models. The P1425-LE is renowned for its infrared (IR) capabilities, which enable it to automatically activate in low-light or dark conditions. The LEDs are invisible to the human eye, but can illuminate an area of up to 50 feet in front of the camera's image sensor.

The bullet-style, outdoor-ready IR Q1765-LE is especially adapted for installation on buildings, and for monitoring entrances, exits, parking lots, and other high-traffic outdoor areas. The camera delivers exceptional image quality and incorporates an 18x optical zoom with autofocus, enabling it to capture fine detail even at great distances. It is also IR-enabled, with four LEDs that cover up to 50 feet in the widest field of view (and up to 130 feet) when the camera is in full telescopic view.